

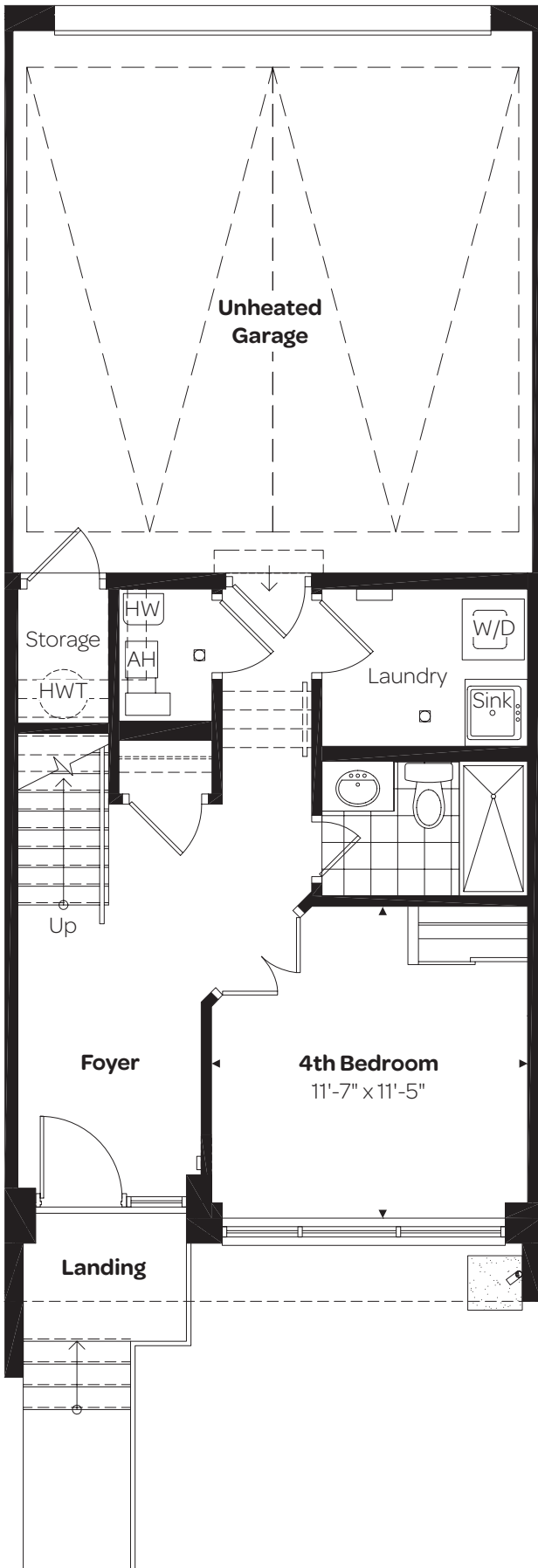


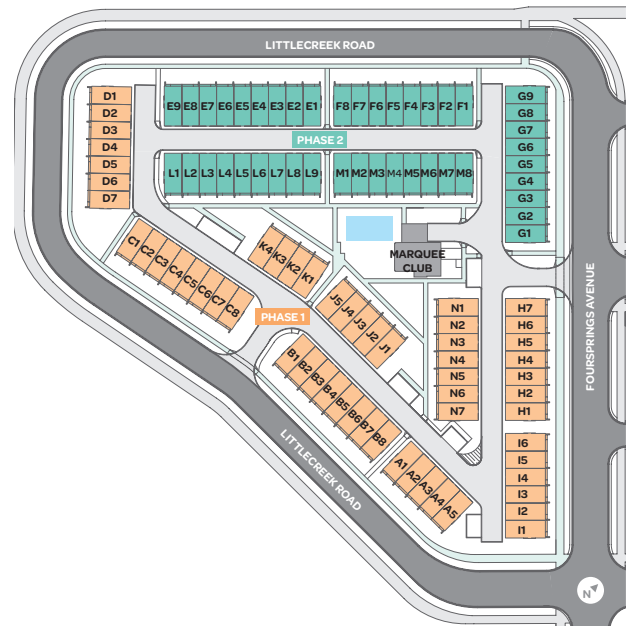
Ground Floor – Angled 4th Bedroom 475 sq.ft.

THE MARQUEE TOWNHOMES ON THE PARK

Elegantly Designed
3 BEDROOM TOWNHOME

Main floor – 767 sq.ft.
Second floor – 763 sq.ft.
Total – 2,005 sq.ft.





All areas and stated room dimensions are approximate. Sizes and specifications are subject to change without notice. Actual living area may vary from floor area stated above. All illustrations are artist concept. E.&O.E.